

# Annual Report and Priorities

2013-14

Derbyshire  
**Safeguarding  
Children**  
Board

**Safeguarding  
Children**  
Everybody's Business

# Contents

Chair's foreword	3
Executive summary	4
Local background and context	5
About DSCB, the statutory and legislative context	9
Priorities for 2012–2013, progress and outcomes	9
Monitoring the work of DSCB sub-groups to safeguard and promote the welfare of children in Derbyshire	13
Governance arrangements of DSCB; audit and analysis	21
Priorities for 2013–2014	26
Concluding statement on the effectiveness of our safeguarding arrangements	28

Report written by:

**Amanda Clarke**

Child Protection Development Manager

Derbyshire County Council}

01629 532181

---

# Chair's Foreword

Welcome to this annual report for Derbyshire Safeguarding Children Board (DSCB). I have recently taken on the role of independent chair of the Board, taking over from Lynn Harris. I would like to begin by thanking Lynn, on behalf of the Board, for all her work as chair, particularly the energy and commitment she brought to the role, which is clearly reflected in the commitment of members of the Board. I would also like to thank all the frontline staff and managers across Derbyshire for their work in safeguarding children. The Board recognises that the effectiveness of safeguarding across the county is dependent on the quality and co-ordination of the work of those people in direct contact with children, young people and families.

The context in which services have been working over the past year has been challenging and will continue to be so in the coming year. The challenges have been both financial and structural, with financial issues in all agencies and structural ones in health in particular. The Board has, during the course of the past year, evaluated its functioning in this changing context. The priorities for 2013–14 set out in this report include actions to strengthen the Board in response to that self-evaluation, and priorities which focus on early help and intervention, vulnerable young people, and disabled children. We will develop how we work in response to the Revised Working Together to Safeguard Children (2013), and as a headline priority we will strive to improve how we respond to and disseminate learning from Serious Case Reviews (SCRs).

Finally, I would like to thank members of Derbyshire Safeguarding Children Board for the welcome they have given me as the new chair, for their commitment to safeguarding and for their determination to improve further our collective effectiveness.

## **Christine Cassell**

Independent Chair

Derbyshire Safeguarding Children Board

# Executive Summary

During 2012–13 Derbyshire Safeguarding Children Board (DSCB) has appointed a new Chair, consolidated and reviewed sub group membership and chairing arrangements, and responded to practice developments in the wake of Eileen Munroe’s review of child protection.

The Serious Care Review (SCR) Panel has completed 3 SCRs and 6 Serious Incident Learning Reviews (SILRs) during the year. There have been important developments made by DSCB in the process for monitoring the implementation of recommendations made, and the dissemination of lessons learnt across the partnership, including wide distribution of publicity materials to all agencies. Key areas of work include the revision of the DSCB Information sharing agreement, the development of the Think Family strategy and charter, and a multi-agency group focusing on practice with parents who misuse substances.

The sub groups have ensured that safeguarding arrangements are robust, flexible and respond to need. Groups have been responsible for a number of new initiatives including the implementation of the process for identifying young people at high risk of harm through the establishment of the High Risk Management Group and the locality Vulnerable Children’s Panels. Our priority going forward will be to add to the progress made regarding Child Sexual Exploitation (CSE) with the agreement of our strategy, and new training and a case audit regarding CSE is planned. A fresh approach regarding missing children and young people is nearing completion which will improve our knowledge, information sharing and recording in this area. These developments will enable better protection of vulnerable children in the future.

This has been a year of audit, review and consolidation for the DSCB, ensuring it is fit for purpose with appropriate governance, business planning and audit structures in place. An independent audit of the performance of the

board identified a number of actions. Agencies fully co-operated with the section 11 audit and the DSCB has a clearly defined set of development plans for further improvement from its member agencies.

DSCB is responding to the Munro review of child protection and the introduction of Working Together 2013. Work is underway on a range of initiatives including revision of policies and procedures regarding thresholds and assessments, and a “back to basics” approach to social work through the implementation of systemic practice.

The Board has acknowledged the need to ensure that disabled children are safeguarded appropriately and work is on-going to embed good practice principles across all service provision working with disabled children and their families.

In terms of the arrangements to safeguard children in Derbyshire, this year has seen the number of children subject to a child protection plan grow, from 552 in 2011–2012 to 588 in 2012–2013. Emotional abuse moves above neglect as the main reason for children to become subject to a plan, 46.3% for emotional abuse compared to 40.8% for neglect. There has also been an increase in the numbers of children who have been made subject to a plan for physical abuse.

Priorities for next year have been grouped into two areas. To improve the protection of children our priorities focus on CSE, children reported as missing, and parental substance misuse. To improve the effectiveness of DSCB our main priorities are to implement changes to key processes including thresholds and assessments due to the revision of Working Together, and the introduction of new governance arrangements. Our focus on children will include finding ways to listen to the child’s voice at the Board. Our headline priority is a continued emphasis on learning from SCRs to ensure recommendations are completed and learning is embedded across all agencies.

# Local background and context

Derbyshire is a two tier authority comprising of the county council and eight district and borough councils. There are five clinical commissioning groups (CCGs), two of which cover outside the Derbyshire boundaries due to their locality. A number of key agencies work in partnership across both Derbyshire and Derby City areas, including the Police, Probation and some Health providers. Therefore strong links exist between Derbyshire Safeguarding Children Board (DSCB) and Derby Safeguarding Children Board. This will be explored later in the report.

## Demographic information

According to the 2011 Census, there are 156,666 children and young people in Derbyshire. This equates to 20.4% of the usual resident population. Of this number the proportion of 0–4 year olds is 5.4%,

5–15 year olds is 12.4% and the proportion of 16 and 17 year olds in Derbyshire is 2.6%.

## Minority Ethnic Population

Children and Young People from minority ethnic groups account for 5.1% of pupils in primary schools and 4.2% of pupils in secondary schools.

## Deprivation

The Child Well-being Index places Derbyshire within the top 20% of all Local Authorities in England. Yet, pockets of deprivation and severe unemployment have meant that the life chances for some children have been severely compromised

## Disability

Research by the Council for Disabled Children (CDC) and Together for Disabled Children (TDC) suggests that 6% of children are likely to be disabled and 1.2% severely disabled. Applying this logic to 2011 Population Estimates, Derbyshire would have

approximately 8,806 disabled children aged 0–16 and 9960 disabled children aged 0–18. Of these 1,761 0–16 year olds and 1,992 0–18 year olds are likely to be severely disabled.

## Education

According to the January 2012 School Census, there were 112,619 pupils in Derbyshire Schools, therefore in daily contact with education professionals. This figure includes maintained nurseries, maintained primary and secondary schools, primary and secondary academies, special schools, pupil referral units and independent schools.

Of these, 21,355 pupils (19.0%) had some form of Special Educational Need.

As at 31 January 2012, approximately 16,900 3 and 4 year olds in Derbyshire benefited from some free early education. This represents a 2% increase on the 2011 figure (16,520). As a percentage of the 3 and 4 year old population, approximately 99% of 3 and 4 year olds in Derbyshire were in receipt of some free early provision.

## Domestic violence

In 2012/13, there were 3139 crimes with a domestic violence flag recorded in Derbyshire (excluding Derby City).

The number of recorded incidents (not crimes) in Derbyshire with any element of domestic violence was 11,308.

## Domestic Abuse Referrals to Children's Social Care

In 2012/13 there were 5304 referrals to Children's Social Care in which domestic abuse was a factor compared to 2239 in 2011/2012. Therefore as a percentage of all referrals to Children's Social Care (11993 in 2012/13) 44.2 % involved domestic abuse.

The Police Central Referral Unit (PCRU) was the leading referral source, accounting for 57.6% of referrals in 2012/13 compared to 41.4% of referrals in 2011/12. The close working relationship between Police and Children's Social Care Safeguarding Services including the co-location of a permanent child protection manager within the PCRU ensures that continual liaison and assessment of risk can take place regarding these referrals. The PCRU will be discussed further in the report

### **Number of Cases at MARAC (Multi-Agency Risk Assessment Conference)**

In 2012/2013 the number of cases requiring a multi-agency risk assessment conference (MARAC) to discuss high risk domestic abuse victims was 379, an increase of 33% since 2011/12 (284). Of these, 53 cases (14.0%) were repeats. 406 children were believed to be present in the cases. This is higher than in the previous year (374) but lower than the two preceding years.

### **Multi-Agency Public Protection Arrangements (MAPPA)**

Derbyshire Constabulary, Derbyshire Probation Trust and HM Prison service (East Midlands) are together responsible for MAPPA in Derby and Derbyshire to manage risks posed by the most serious sexual and violent offenders. These arrangements are supported by other DSCB colleagues including Social Care and Health. As at 31 March 2012 there were 1090 MAPPA-eligible offenders in Derbyshire.

## **Further information on Derbyshire's children involved with safeguarding agencies**

### **Early Help**

As of June 2013, Derbyshire was providing Early Help Support to 5,917 families through its integrated Multi-Agency Teams, including 711 'Troubled Families', of which approximately 380 had a successful outcome.

Derbyshire has re-launched its Common Assessment Process and, as of September 2013, 1,289 assessments using the Common Assessment Framework (CAF) were in place ensuring children, young people and their families received integrated coordinated support.

### **Child Protection Plans**

As at 31 March 2013, 588 children in Derbyshire were subject to a Child Protection Plan. This is an increase from 552 in 2011–2012.

As at 31 March 2013, emotional abuse was the reason for the largest proportion of Child Protection Plans in Derbyshire (46.3%). This was followed by neglect (40.8%) and could suggest our focus on neglect and related issues may be having a positive outcome as neglect was the lead category in 2011–2012 with 46.6% of Plans.

The Plan data suggests that emotional abuse may be a growing problem in Derbyshire, with an increase from 2011–2012 to in 2012–2013. Our priorities for 2013–2014 focus particularly on early help and intervention, domestic abuse and parental substance abuse, which will hopefully assist in addressing this rise. The proportion of Plans due to physical abuse (9.0%) has also seen an increase, from the previous year (5.3%). This will be monitored.

### **Age Profile**

As of 31 March 2013, the largest proportion of Child Protection Plans in Derbyshire were for children between the ages of 1 and 4 (33.3%). This was followed by 5–9 year olds (25%). The age distribution of Child Protection Plans in Derbyshire is broadly similar to that seen in England overall.

### **Other profiles**

The number of disabled children subject to Child Protection Plans was 141 (from June 2012–May 2013). Data for Black and minority ethnic children on Plans is unfortunately less detailed; for the year ending March 2013 425 children on plans were recorded as white British, 22 were non-white British, 141 had ethnicity unrecorded or not obtained.

## Length of Plans

As at 31 March 2013, the largest proportion of Child Protection Plans in Derbyshire (30.3%) were 6 months to one year in duration. A very small proportion of plans (1.7%) had been in place for 2 years or more.

## Number of plans

In Derbyshire 16.9% of children who became subject of a Child Protection Plan in 2012/2013 became the subject of a plan for a second or subsequent time. This represents a 3% increase on the previous year's figure (13.9%).

## Plans reviewed in timescales

As at 31 March 2013, 100% of children in Derbyshire who were the subject of a Child Protection Plan for three months or more had their reviews carried out within the required timescales. Derbyshire has achieved 100% in five of the last six years.

## Child Protection Conferences

In the year ending 31 March 2013 851 children in Derbyshire were the subject of an initial stage child protection conference. This compares to 887 for the year ending March 2012. In the five years to March 2012, the number of child protection conferences in Derbyshire had increased year on year, representing a 62.2% change since 2007/08. However the number of children subject to initial conferences during 2012/2013 has decreased. In 2013 88.6% (754) initial child protection conferences were held within 15 days of the start of the section 47 enquiry. To compare in 2012, the figure was 85.7% (760). Over the last six years, the proportion of initial child protection conferences completed within 15 days has increased year on year, which is positive.

## Attendance at Child Protection Conferences

The table below shows attendance at Initial Child Protection and Review Conferences in 2012/ 2013. For some agencies the numbers given are the total number of individuals from an agency invited. Therefore, there may be more than one person from the same agency but with different roles invited to a

meeting. Social Care and Health in particular, have a number of different role types and levels, invited to initial and review conferences. This is now under review. For a further breakdown of attendance see the tables in appendices.

Some figures suggest that further commitment and scrutiny by DSCB is required to increase multi-agency attendance at both Initial Child Protection and Review Conferences.

Whilst the numbers of parents and carers attending is positive, children and young people are not routinely being given the opportunity to participate. This is recognised as not acceptable and is being addressed. Amendments to conference timings have already been made, for example conferences involving older children commence at 15:30 to minimise disruption to school attendance. An example of good practice relating to children participating in conferences occurred in 2013 when a child protection manager met with a young person prior and separate to the conference to inform and encourage the young person to attend. The young person did attend and made a full contribution to the meeting.

For a further breakdown of Social Care and Health attendance see appendices.

## Looked After Children

As at 31 March 2013, there were 664 children in Derbyshire who were in local authority care. Compared to the same period ending March 2012 (700 children) this was a decrease of 5.1%. 2012–2013 is the first year in the last six where numbers of Looked After children have decreased. 9.6% of these 664 children had three or more placements during the year which is an increase from 7.9% in 2011–2012.

Role Type	Initial Child Protection Conferences			Review Conferences		
	Invited	Attended	% Attended	Invited	Attended	% Attended
Adult Care	1	1	100.0%	5	3	60.0%
Advocacy	53	52	98.1%	58	55	94.8%
CAYA Children's Centres	160	126	78.8%	319	259	81.2%
CAYA Family Support Centres	136	102	75.0%	382	299	78.3%
CAYA Social Worker	670	582	86.9%	1070	867	81.0%
Child/Young Person	16	16	100.0%	30	29	96.7%
Education	519	379	73.0%	1052	831	79.0%
Health Visitor	367	298	81.2%	605	505	83.5%
School Nurse	356	237	66.6%	640	485	75.8%
GP	486	22	4.5%	780	16	2.1%
Children's Mental Health	26	12	46.2%	46	15	32.6%
Community Mental Health	30	13	43.3%	54	20	37.0%
Parent/Carer/Family Member	851	784	92.1%	1500	1305	87.0%
Police	242	152	62.8%	116	75	64.7%
Probation	101	38	37.6%	130	63	48.5%
Voluntary Sector	5	3	60.0%	3	1	33.3%
Youth Offending Team	14	9	64.3%	24	13	54.2%

## Private Fostering

The number of children in Derbyshire cared for under a private fostering arrangement has decreased considerably in the last three years. This reduction is primarily a result of children under a private fostering arrangement reaching the age of 18, and a decline in new cases being referred. Currently the number of children in a private fostering arrangement is just four.

## Number of Children missing from Home or Care

In the 2012/13 financial year, 459 individual children in Derbyshire ran away from home or care at some point in the year. This represents a 12.4% decrease on the 2011/12 figure (524). In the last five years numbers have decreased considerably and are now 49% lower than the 2008/09 figure.

In terms of episodes (the number of times these 459 children ran away), numbers have also dramatically decreased. In 2012/13 there were 1008 instances of children being reported as missing. On average each child went missing 2.2 times.

The majority of runaways (just over 72%) were between the ages of 14 and 17. This age group also accounted for 78% of reported episodes.

## Children missing from Education

The definition of a child missing from education (CME) is those children who do not arrive at school and there is no explanation for their absence.

The total number of children and young people referred to CME in 2012–13 was 432, with 418 being found during the same period.

There are currently (September 13) 65 CME open cases which are at various stages of tracking. The 65 includes some long term cases: i.e. 24 cases were referred in 2013–14, 36 were referred in 2012–13, 4 were referred in 2011–12 and 1 was referred in 2009–10. The 24 cases referred in 2013–14 include no travellers, whereas the 36 referred in 2012–13 include 20 travellers.



# About DSCB, the statutory and legislative context

DSCB was formally established in April 2006 in response to the requirements of the Children Act 2004 and its accompanying guidance at the time, 'Working Together to Safeguard Children' (2006).

DSCB has a range of roles and statutory functions including developing local safeguarding policy and procedures and scrutinising local arrangements. DSCB will:

- Coordinate what is done by each person or body represented on the Board for the purposes of safeguarding and promoting the welfare of children in the area; and
- Ensure the effectiveness of what is done by each person or body for those purposes.

This report is the Annual Review of the work of DSCB for the business year 2012–2013 and a reflection of how the objectives set out above have been achieved. It is a rigorous and transparent assessment of the performance and effectiveness of safeguarding in the local area. The report will demonstrate the contributions made by LSCB partner agencies toward the work of DSCB.

It will provide the public, practitioners and main stakeholders with an overview of how well children in Derbyshire are protected, and identify any gaps in service development and challenges ahead for the coming year.

The report considers the priorities set within the DSCB business plan for 2012–13, progress against these priorities, and areas for further development.

## Priorities, progress and outcomes

This section sets out the progress of member agencies of the DSCB in taking forward the priority actions identified in the annual report and business

plan 2011–13 to safeguard and promote the welfare of children in Derbyshire.

### **Priority 1: Develop early identification and early help services to children and their families.**

**Progress:** The DSCB and Children's Trust Board approved during 2012–3, the Early Intervention and Prevention Strategy which includes Derbyshire's definition of prevention and early intervention –

*To identify those children and young people who are vulnerable to poor outcomes and together, to intervene either early in a child's life or at the earliest opportunity, so as to make a positive difference for this generation of children and the next generation of parents.*

The "Early Help Offer" and performance measures to interpret Derbyshire's ability to identify and deliver effective early help services are ready for presentation to the Children Trust. The Early Help Offer supports families to independently access relevant universal services, and identify relevant "step up" targeted and specialist provision on assessment of additional vulnerability.

To refresh the Common Assessment Framework (CAF) in Derbyshire a revised training programme is in place supported by locality CAF volume targets to address both anticipated need and encourage the embedding of CAF in practice (see priority 2 below).

Work has commenced to integrate the delivery of early help services and children's social care services. It is anticipated to include co-location of multi-agency teams and social care teams with integrated team management, a single referral pathway and thresholds for services.

## **Priority 2: Implement a single assessment tool for all agencies.**

**Progress:** The Common Assessment Framework format has been re-designed resulting in a shorter more streamlined assessment tool. A key theme of the revised CAF training includes assessment and analytical skills, which will enable staff to produce effective, quality action plans with a clear emphasis on outcomes for the child. The training programme includes CAF Champion arrangements in multi-agency teams across Derbyshire and a Train the Trainer course.

There was consultation with Derby City Council Children and Young People's Department and health providers during the re-design of the CAF. Agreement has been reached with Derby and Derbyshire agencies for the use of a pre-birth assessment tool as part of the suite of assessment tools available to staff.

DSCB has worked closely with Derby LSCB during 2012–13 to establish a joint policies and procedures group. Work is ongoing within this group regarding the implementation of a single assessment tool for use across both Derbyshire and Derby agencies. This will provide consistency and streamline information sharing particularly for agencies working across both County and City areas, and will benefit the children and families being assessed.

## **Priority 3: Work with adult services to promote the “Think Family” model.**

**Progress:** This model was promoted to 250 multi-agency delegates from Adult and Children's services at a conference 'Early Intervention, Prevention and Think Family' held in April 2012 where the vision and strategic approach for 'Think Family' was shared.

A priority from the conference was that the 'Think Family' strategy should be owned by key service providers of adult and children's services in Derbyshire and Derby. Existing joint protocols would be the foundation and amendments via the strategy will make even more of a difference to the safety and welfare of children and adults in Derbyshire.

A Think Family working group has been formed to develop the charter. This will highlight key practice responsibilities to address vulnerabilities of

households as a whole, and consider the toxic mix (parental mental ill-health, domestic abuse and substance misuse) as a key prompt in identifying safeguarding concerns. The charter will be embedded in training and commissioning and all staff will be encouraged to sign up to its principles. An audit programme will be agreed to ensure the key messages of Think Family are translated into practice.

## **Priority 4: Develop a process for identifying and supporting young people who are most at risk, including risk due to sexual exploitation, running away and self-harm.**

**Progress:** The High Risk Management Group was established in 2012 and aims to take effective joint action where a young person is missing and/or at risk of serious significant harm or of committing serious offences or is otherwise at risk of serious physical harm, sexual or economic exploitation.

The group is chaired by a senior police officer and attended by senior managers from all key agencies. In a multi-agency forum the group aims to secure the safety or reduce the risks to the young person by:

- Sharing intelligence
- Agreeing joint action
- Disrupting the exploitative activities of adults
- Pursuing prosecutions as necessary
- Identify gaps in service.

The Group met six times during 2012–13 and six referrals were discussed. Risk factors for young people included:

- Disruptive behaviour and damaging property
- Sexual exploitation
- Substance misuse
- Missing from home
- Homelessness
- Neglect and inappropriate sexual relationship.

Actions to safeguard the young people were identified and will be regularly reviewed. Of the six cases five young people are still being supported by children's social care. The remaining case has a positive outcome with the young person living out of the area, no longer requiring services.

## Child Sexual Exploitation Plan

A multi-agency group is responsible for co-ordinating the implementation of Derbyshire's CSE plan. The plan was approved by DSCB in October 2012.

The monitoring tools produced by University of Bedfordshire have been used to assess the county's position and the CSE plan identifies the following five key areas for development:

- Recognising CSE
- Co-ordinating a multi-agency approach
- Supporting young people and their families
- Identifying, investigating, disrupting and prosecuting abusers
- Updating management information systems to readily identify and collect data regarding CSE.

A priority for DSCB is to agree a formal CSE strategy and to promote this widely. Safe and Sound, a leading voluntary agency working with young people and families affected by CSE have been commissioned and will work jointly with DSCB partners, particularly children's social care. Areas for development include strategy implementation, awareness raising and training, and case audit. This will improve effectiveness and practice across the workforce and provide better protection and service for children and young people affected by CSE.

## Young people who are missing

A joint protocol between Derbyshire Children's Social Care and Derbyshire Police has been agreed to ensure more robust information sharing, recording and follow up between agencies regarding children and young people reported missing or as runaways. The new arrangements will be overseen by the child protection manager based within the Police Central Referral Unit. Data regarding missing children will in the future be regularly reported and reviewed alongside other safeguarding management information. This will provide a more current and useful steer regarding Derbyshire's missing children and further commissioning as required.

## Multi-Agency Safeguarding Hub arrangements

DSCB has established a response to the development of Multi-Agency Safeguarding Hubs (MASH) nationally. The Police Central Referral Unit has been in operation within Derbyshire Police since November 2008. SCRs, inspections and enquiries have highlighted the need for prompt sharing of information and decision making across agencies concerning child protection matters. The deployment of a Derbyshire County Council child protection manager and business support staff within the Police Central Referral Unit this year aims to facilitate mutual information sharing and support service improvement. The co-location enables immediate sharing of information and intelligence, advice on thresholds, assessment of risk, and use of professional judgement and challenge, all of which are essential aspects in ensuring effective outcomes for vulnerable children and young people. Progress of the arrangements is regularly scrutinised, and reported directly to DSCB. Further developments are in discussion including agreements with Derbyshire Adult Care and Derby City Children's Social Care, and a commitment to implement a system of immediate information sharing of domestic violence intelligence with Health partners including health visiting and midwifery staff.

## Self-harm

DSCB has worked collectively with Derby Safeguarding Board and Derby Hospitals NHS Foundation Trust on an information leaflet and practice guidance regarding self-harm. This was distributed widely across Derbyshire agencies including Health partners, Youth Services, Education settings, Police and Social Care, and gives valuable information on self-harm specifically about the causes, warning signs, and how to help. This was a significant piece of work particularly as self-harm is routinely seen as an issue in the lives of vulnerable children and young people.

## **Priority 5: Review and amend policies and procedures in light of the Munro Review.**

**Progress:** The joint Derbyshire and Derby Safeguarding Children Board Policies and Procedures group was established during 2012 and worked together to update and amend procedures to ensure compliance with the recommendations and intentions of the Munro review.

The following policies and procedures have been approved during 2012–13:

- Allegations against staff, carers and volunteers
- Children at risk of abuse through female genital mutilation
- Multi-agency working, including referral pathways from early intervention through to social care.

In addition the following service improvements have been implemented:

- A Delivery Protection plan for use in maternity units and hospitals to record multi-agency plans for vulnerable new born babies
- Multi-agency guidance on home visits.

Following the publication of Working Together to Safeguard Children in April 2013, DSCB has prioritised the development of key policies and procedures including a threshold document and a process for the identification and assessment of children who would benefit from early help.

The joint Derbyshire and Derby LSCB Policies and Procedures sub group successfully implemented an online policies and procedures manual in February 2013. The manual is available on the DSCB website. All users of the manual can sign up to receive regular updates on national changes relating to safeguarding processes. The online manual will be updated twice-yearly to reflect local amendments to the policies and procedures.

## **Priority 6: Review and improve practice for disabled children in light of the Ofsted inspection of services for disabled children.**

**Progress:** An action plan has been implemented following recommendations made by Ofsted in a

thematic inspection undertaken in 2012. Actions included:

- To ensure that thresholds for child protection are well understood and rigorously applied at every stage of work with disabled children
- The establishment of robust quality assurance case file audits and management information systems to assess and evaluate the quality and impact of work with disabled children
- To ensure that DSCB provides a robust training programme to provide staff with the knowledge of how to safe guard children who are disabled
- To ensure that careful consideration is always given to how best to obtain children's views, taking the children's disabilities into account, and that wherever possible children's feelings are sought about the identified concerns and risks.

Much progress has been made and work will continue to improve outcomes for disabled children and their families. We have:

- Developed specific child protection and looked after child training to improve outcomes for disabled children subject to child protection plans and child in care processes
- Continued to embed good practice principles across all disabled children's services to ensure the voices of children and young people are heard, that their voices inform and are reflected in the work we do
- Reviewed the disabled children's protocol and criteria has been reviewed and updated, and published on the Derbyshire County council website
- Ensured senior managers from Disabled Children's Services are now represented on DSCB sub groups.

Disabled children remain a key focus for DSCB and this is reflected in the priorities for 2013–2014.

# Monitoring the effectiveness of local work to safeguard and promote the welfare of children in Derbyshire

## The work of our DSCB sub-groups during 2012/2013

This section sets out how the DSCB monitors the work of our sub groups, and their progress and effectiveness in safeguarding children in Derbyshire. Summaries of work programmes for 2013–14 are included.

### Quality and Performance Sub Group

The Quality and Performance group is responsible for the review and provision of inter-agency performance against standards set by the DSCB. This is achieved through audits, reviews and studies as required and commissioned by the DSCB.

The group meets bi-monthly. The agency composition of membership of the group is attached as an appendix.

### What has been achieved by the Quality and Performance group during 2012–2013?

- An LSCB self-evaluation tool has been redesigned and a self-evaluation process was commissioned through an independent facilitator. Findings were presented to DSCB together with an action plan with actions in progress.
- Our section 11 process was designed and implemented to identify current strengths and areas for development regarding the effectiveness of safeguarding across Derbyshire agencies.
- A new performance reporting schedule was implemented with a view to increasing multi-agency aspects of performance and providing key narrative intelligence.
- Staff were required to complete a workforce competence questionnaire designed by the Quality and Performance group to assess competence across Derbyshire safeguarding agencies.
- Work commenced on the new Ofsted framework for child protection to inform the 2013–14 work programme of the group.
- Private fostering was identified by the sub-group as a key activity area in need of attention. A mandatory web-based training programme was designed and disseminated by DSCB member agencies for all staff. The e-learning package aims to raise awareness and increase the referral rates of children who are privately fostered, to children's social care. DSCB will monitor questionnaire completion rates.
- Agreement was reached for a monthly DSCB practice audit programme to evaluate the effectiveness of child protection case conferences. The first audit produced a useful critique of conference recording which will be shared appropriately with relevant staff. The multi-agency group involved in the audit agreed that this type of concentrated, multi-professional review of work was a positive and meaningful exercise.

The Quality and Performance sub-group work programme for 2013/14 includes:

- Continuing monthly practice audits with findings reported to DSCB.
- Quality assurance of recommendations arising from the Section 11 audit.
- Assessment of findings from the child protection case conference audit programme with a view to informing future practice and approach.
- Implementation of a new staff and management safeguarding questionnaire with a target to achieving higher participation rates than in 2012/13.
- Commissioning the redesign of the DSCB website, including arrangements for monitoring feedback on access and quality.
- Commissioning a baseline evaluation of staff and managers awareness of learning from serious case reviews to identify action to address potential deficits.

### **Serious Case Review Sub Committee**

The Serious Case Review (SCR) sub committee is responsible for undertaking reviews of cases where abuse or neglect of a child is known or suspected, a child has died or been seriously harmed, and there are concerns regarding how agencies worked together to safeguard the child.

The SCR sub committee meets bi-monthly. Six meetings took place during 2012–2013 plus one extraordinary meeting of the sub committee in September 2012 after a death in custody.

The sub committee is independently chaired by a Service Director from Derby City Council under a reciprocal arrangement.

Membership of the group is attached as an appendix.

### **What has been achieved by the SCR sub committee during 2012–2013?**

There have been two SCRs during 2012–13:

- **ADS12** – A young person aged 17 years died by hanging in a young offenders institution in Wigan
- **BDS12** – A child aged 2 years died having ingested his mother's methadone that had been put in the child's drinking beaker.

#### **ADS12**

Due to the nature of the death, appropriate links were made with the Prison and Probation Ombudsman (PPO), who carried out an independent review of the circumstances at the Young Offenders Institution, the Youth Justice Board and Wigan LSCB.

The participation of the family of the deceased young person was proactively sought during the review process. Family members met with the overview author and provided pertinent information to inform the review in order to obtain the best possible understanding of what had happened and why.

The report of the review by the PPO has yet to be published. However the SCR overview author and PPO author maintained a high degree of co-operation and liaison to ensure accuracy and consistency of information.

The DSCB overview report was signed off by DSCB in September 2012 but the inquest into the death of this young person has not yet been held. The SCR overview report will be published after the inquest is concluded.

#### **BDS12**

The child's parents were both found guilty of his manslaughter and his mother was found guilty of child cruelty. They received custodial sentences. The independent author interviewed both parents at the conclusion of their trial and their contributions have been included in the overview report. DSCB will always strive to involve relevant family members in SCR processes whatever their position with regard to the child's death.

The overview report was discussed at the SCR sub committee in March 2013 and approved by the DSCB in April 2013. Publication has been delayed due to the parents' appeal processes.

### **Other Local Authority SCRs**

**BSCB 2011–12/2** DSCB has worked closely with Birmingham LSCB on a SCR regarding a child aged 4 years who died in Birmingham in 2011.

A representative from DSCB was a member of the Birmingham panel.

### **Serious Incident Learning Reviews (SILRs) conducted during 2012–13**

The SCR sub committee has commissioned six SILRs during 2012/13. These take place when, after an initial review of the case, it is decided that there are lessons to be learnt, but the threshold for a SCR is not met.

The learning review consists of professionals from each organisation involved with the child or family, meeting together, usually for a day, to share information, identify good practice and missed opportunities and to draw out any learning which might help to prevent similar events in the future. On occasion, follow-up meetings may also be arranged.

Feedback from professionals involved in SILRs has been positive. With the implementation of Working Together to Safeguard Children 2013, DSCB is reviewing SCR methodologies. It is expected that the process of SILRs will be formalised and that this type of review will continue in cases where appropriate.

### **Learning from SCRs and SILRs**

DSCB recognises the importance of learning and improving from our experiences in this area, therefore we have agreed this as our headline priority. A range of learning, and themes from SCRs and SILRs have been pulled together from our most recent reviews, and from the preceding three years.

We have identified that:

**Babies** are particularly at risk from abuse and neglect including

- Shaking
- Co-sleeping
- Domestic abuse
- Methadone used as a soother
- Lack of ante-natal assessment.

**Teenagers** – a quarter of all SCRs/SILRs have been about the serious injury or death of a teenage. Issues include:

- Suicide/self-harm
- CSE
- Offending behaviour
- Missing from school, home or care
- Difficult to engage.

**Parents** – the death or serious injury of children and young people often has contributory factors including:

- Substance misuse
- Mental health
- Domestic abuse
- Hostility/non-engagement
- Disguised compliance
- Violent men.

It is vital that themes and learning is shared across all agencies to improve practice and increase safeguards to children and young people. The SCR sub group has identified a number of practice developments for professionals including:

- Information gathering, sharing and recording
- Assessing the complete circumstances of the child and family, including their history
- Critically analysing all information
- Ensuring the needs of the child are paramount above those of the parents
- Seeing a child at home and where they sleep.

## Progress

This information has been widely disseminated across all agencies working with children, young people and their families in the form of posters, leaflets and mouse mats. An online e-learning package is being developed for all practitioners to use which will promote understanding of the key learning and themes.

DSCB has responded robustly to the learning from BDS12 SCR regarding issues arising from substance misusing parents. A multi-agency group has been formed tasked with developing practice to improve outcomes for substance misusing parents. A development day was attended by 140 professionals in June 2013, including practitioners and managers from adult and children's services. There was positive feedback from attendees and a real sense of willingness to work together to improve practice relating to substance using parents and their children. The multi-agency parental substance misuse working group is continuing to meet to ensure progress continues regarding this theme.

Information and guidance for parents and carers, and professionals relating to safe sleeping and has been agreed by the Child Death Overview Panel (CDOP). A DVD titled "Don't shake the baby" has been produced and is being shown to new parents (including fathers) before they are discharged from maternity units. Discussions are underway, led by DSCB for wider circulation of the DVD and the targeting of predominantly male audiences.

Links have been made with Safe and Sound, a Derby city voluntary organisation which supports young people and families who have experience of CSE. Safe and Sound have been commissioned to support the development of the DCC CSE strategy, to provide training for relevant staff across the authority, and to audit cases with possible CSE features.

## Monitoring the implementation of action plans and recommendations from SCRs and SILRs

DSCB recognises the importance of embedding the learning from SCRs and ensuring this does not get

lost once recommendations have been agreed. A task and finish group of the SCR sub group has developed a process for monitoring the implementation of all recommendations made in SCRs and SILRs.

Progress updates have been issued to those agencies responsible for implementing recommendations made in SCRs and SILRs from 2008–2102. An electronic action tracker stores documentary evidence of implementation.

Current data from the action tracker as of (July 2013) shows 292 recommendations made in 13 SCRs and SILRs and documentary evidence of implementation of 99 of these has been received. The tracker contains hyper-links to the evidence. Agencies have confirmed implementation of a further 60 recommendations and requests have been issued for supporting evidence to be provided. Outcomes from the other outstanding recommendations will be strongly pursued. The action tracker is administered on behalf of the DSCB by the Children and Young Adults (CAYA)'s safeguarding administrative team with progress regularly discussed with the CAYA head of child protection.

Methods for measuring the impact of the implementation of the recommendations made in SCRs and SILRs will be developed during 2013–14 with agencies held to account by DSCB when necessary.

## Child Death Overview Panel

The Child Death Overview Panel (CDOP) is a joint group with Derby LSCB. The panel has three main functions:

- To maintain and report on a database of all deaths of children and young people aged 0–17 years (inclusive)
- To oversee the investigations into these deaths
- To learn lessons from these investigations, identify where there may be preventable causes and disseminate those lessons to Safeguarding Boards and other relevant stakeholders in Derbyshire and Derby city.

CDOP meets monthly. Membership is as an appendix.



## What has been achieved by CDOP during 2012–2013?

During this year a new chair for CDOP has been appointed and the CDOP annual report which relates to all child deaths during the 2011 calendar year was finalised and presented to DSCB.

In 2011 modifiable factors, which *may* have contributed (not *did* contribute) to a death of a child were predominantly Sudden Infant Death Syndrome and safe sleeping. Recommendations included widening the remit of the Safe Sleeping Group to a broader “Keeping Infants Safe” agenda to encompass safe sleeping, recognition and parental management of illness, prevention of shaken baby, and antenatal assessment.

Priorities for 2013–14 include improving data collection, and in particular the ability to interrogate the database regarding modifiable factors and learning points. Case presentations to CDOP will be streamlined to ensure appropriate balance between consideration of clinical care relating to the death, and other factors, including safeguarding.

### Policies and Procedures Sub Group

The Policies and Procedures sub group is a joint group with Derby Safeguarding Children Board. The group is responsible for developing common policies and procedures, and joint ways of working across Derbyshire and Derby city to safeguard children. The Policies and Procedures group advise and make recommendations to both County and City Boards on all inter-agency matters related to the policy, procedure and practice of safeguarding children.

The Policies and Procedures sub group meets on a bi-monthly frequency. Membership is as an appendix.

### What has been achieved by the Policies and Procedures sub group during 2012–2013

- Revision of the procedures for investigating allegations against staff, carers and volunteers, procedures for children at risk of abuse through female genital mutilation, and revision of the policy on multi-agency working to include referral pathways from early intervention through to social care.

- Implementation of a Delivery Protection plan for use in maternity units and hospitals to record multi-agency plans for vulnerable new born babies.
- Implementation of multi-agency guidance on home visits.

A key area of work completed during this year has been the delivery of an online policies and procedures manual in February 2013 (see update on Priority 5 above). The manual is available for all on the DSCB website, and will be updated twice a year to ensure all information is as robust and current as is possible.

The Policies and Procedures work programme for 2013–14 will focus on developing key processes identified in the revised Working Together to Safeguard Children 2013. The main areas of work for action during the year are:

- Completion of an updated threshold document
- Completion of a local authority assessment process – from identifying children who would benefit from early help through to statutory assessments under the Children Act 1989
- A learning and improvement framework including a process for conducting serious case reviews
- Revision of the Derbyshire and Derby safeguarding procedures.

### Inter-Agency Development Sub Group

The inter-agency development group is responsible for co-ordinating, implementing and monitoring the project management of key areas for development identified by DSCB and SCRs and SILRs. The group meets quarterly.

Membership is as an appendix.

### What has been achieved by the Inter-Agency sub group during 2012–2013?

- Revision of the Information Sharing Agreement & Practitioner Guidance
- A CSE action plan has been agreed by DSCB and a separate multi-agency implementation group formed. Work is in progress regarding a formal CSE strategy.

- Regarding early intervention and prevention the Common Assessment Framework (CAF) process has been revised and a specific assessment designed for unborn babies with vulnerable parents.
- Contribution to Violence against Women and Girls, in response to the national “Call to End of Violence against Women and Girls Action Plan” and a number of national and local SCR themes identifying the negative impact of domestic abuse on children and young people.

The Inter-Agency Development group work programme for 2013/14 will transfer to the newly formed DSCB Executive group under the new governance arrangements for DSCB. The new group’s work programme will include:

- Monitoring progress regarding action on CSE and Early Intervention and Prevention
- Assisting the implementation of the Information Sharing Protocol including raising the profile of staff guidance through marketing and inclusion in all events through 2013–14
- Progress the positive steps taken regarding parental substance abuse. Following a high profile SCR (BDS12 see above) a task and finish group was established to develop a comprehensive working strategy to inform service development and best practice, to improve information sharing arrangements, to develop the quality of assessments, and overall to improve outcomes for children, young people and their families
- Examination of supervision arrangements due to national and local SCR themes which identified the importance of supervision of practitioners. The need for “a charter for supervision” which identifies best practice models and provides expectations for supervision will be explored.

### **Training, Learning and Development Sub Group**

The Training, Learning and Development (TLD) group was responsible for managing and identifying training needs, planning and commissioning of training and the evaluation of multi-agency training. Derbyshire and Derby Safeguarding Children Boards commissioned the work of the TLD group. DSCB reviewed the role,

function and membership of TLD during 2012 which resulted in two new groups being established. The groups are the Workforce sub group and the Training Providers sub group which met for the first time in June 2013.

### **What has been achieved by the Training Learning and Development sub group during 2012–2013?**

- 4,250 individuals have attended training courses, this figure does not include attendance at the conference below, or Derbyshire staff attending training events organised by Derby City.
- A successful “Think Family” conference was held in April 2012 attended by 250 delegates for the first time from County and City Adult and Children’s statutory and voluntary services.
- A single shared training programme was developed to run from September 2013, the programme was informed by a partner agency audit.
- A rigorous ‘no show’ follow up process was implemented with no shows reduced by 50%.
- An impact evaluation programme was undertaken comprising of formal post-course follow up with participants and managers. Responses were disappointing raising concerns about the degree to which a ‘learning culture’ is embedded in agencies. Munro-funding supported an independent follow up project in Derby which highlighted the value of direct and repeated (as necessary) contact with participants. Derbyshire have also now commissioned similar work.
- The ‘Bounce’ and ‘Parachute’ projects have developed into the ‘Your Voice’ initiative for participation which is a showcase for children and young people’s films and creative media projects exploring aspects of safeguarding with children and young people in care, in schools, in youth clubs and in other projects. Links to examples of this work are available on the new DSCB website.
- E-learning programmes available to partner agencies were promoted; a ‘Private Fostering’ e-learning package was designed and promoted at a DSCB meeting and to all Derbyshire CAYA staff. A “lessons from SCRs” package is in development.

- Training for schools and colleges has increased significantly in 2012–2013. Across the three terms of the 2012–13 training period, c.1800 participants accessed safeguarding courses provided by the DSCB Training Team of whom c.75% attended a specific ‘whole school’ session (39 sessions run from April 2012 to March 2013) and c.25% comprising Designated Senior Persons (DSPs) attending one or more of four courses: DSP Introduction, DSP Briefing, Safer Recruitment and Managing.
- A “lessons from SCRs” package is in development and DSCB continues to ensure lessons from serious incidents and SCRs (national and local) are included in all training. Several courses use training materials and activities developed directly from SCRs.

## Workforce Sub Group

The roles and responsibilities of the newly formed Workforce group are:

- To promote awareness and understanding of safe recruitment practice and monitor the implementation of policies and procedures for checking the suitability of people applying for work with children
- Ensure the children’s workforce is properly supervised and their safeguarding training needs identified
- Conduct a regular analysis of safeguarding training needs across the workforce, taking account of learning from SCRs and Quality Assurance activity, and commission the necessary training
- Evaluate safeguarding training to ensure that it is meeting local needs and monitor the impact on practice
- Ensure policies, procedures and staff are in place so that allegations against staff and volunteers are dealt with properly and relevant notifications are made when appropriate
- Ensure robust quality assurance processes are in place to monitor the reporting, investigation and resolution of allegations concerning persons working with children

- Consider the impact on safeguarding practice of local or national developments in relation to workforce issues including recruitment, funding and organisational change.

Membership is as an appendix.

The work programme for 2013–14 will reflect these responsibilities to ensure that effective safeguarding practice is central to all workforce processes.

## Training Providers Sub Group

The role and responsibilities of the newly formed group are:

- To design and deliver a training programme according to the needs identified and commissioned by the Workforce Sub Group
- To commission additional activity periodically as/ when the need arises for example, from serious case reviews
- To liaise with Adult Safeguarding Boards, partner agencies and relevant others in relation to shared delivery of training
- To develop and implement a model of quality assurance to evaluate the impact and quality of training by DSCB, partner agencies and commissioned independent providers
- Monitor attendance and take up of training by key staff
- Make recommendations for changes to the commissioned training on the basis of feedback, observed shortfall and national or local developments
- Develop a model for accreditation of independent providers commissioned by partners and implement
- Recruit and develop a pool of trainers from partner agencies to deliver DSCB training, ensuring appropriate skills and/or accreditation.

Membership is as an appendix.

In the 2012 independent audit of the performance of DSCB, multi-agency training was described as a strength. The new Training Providers sub-group will continue to build on the work of the TLD group to equip staff with the necessary skills and knowledge

---

required to maintain the protection of children and young people in the county and city.

The work programme for 2013–14 includes:

- Delivery of a full year's shared County and City multi-agency safeguarding training programme
- Further development of 'e-learning' resources including an e-learning programme addressing lessons from SCRs
- The continued promotion and support for service users, particularly children and young peoples', participation in training, learning and development
- The Impact Evaluation Strategy for 2013–14 to include the specific targeting of a small number of courses; the review and establishment of SMART objectives; a baseline assessment; an immediate response assessment and a post-course direct follow up (involving members of the TLD)
- Review of all training, learning and development arrangements in line with the recommendations of the Munro Reviews, the House of Commons Education Select Committee Report 'Children First' (Nov 2012) and new statutory and related guidance in 'Working Together' 2013.

# Governance arrangements of DSCB; audit and analysis

DSCB has senior representation with the key agencies with a responsibility for safeguarding children in Derbyshire.

The Board currently meets bi-monthly and takes a strategic lead in the protection of children and young people.

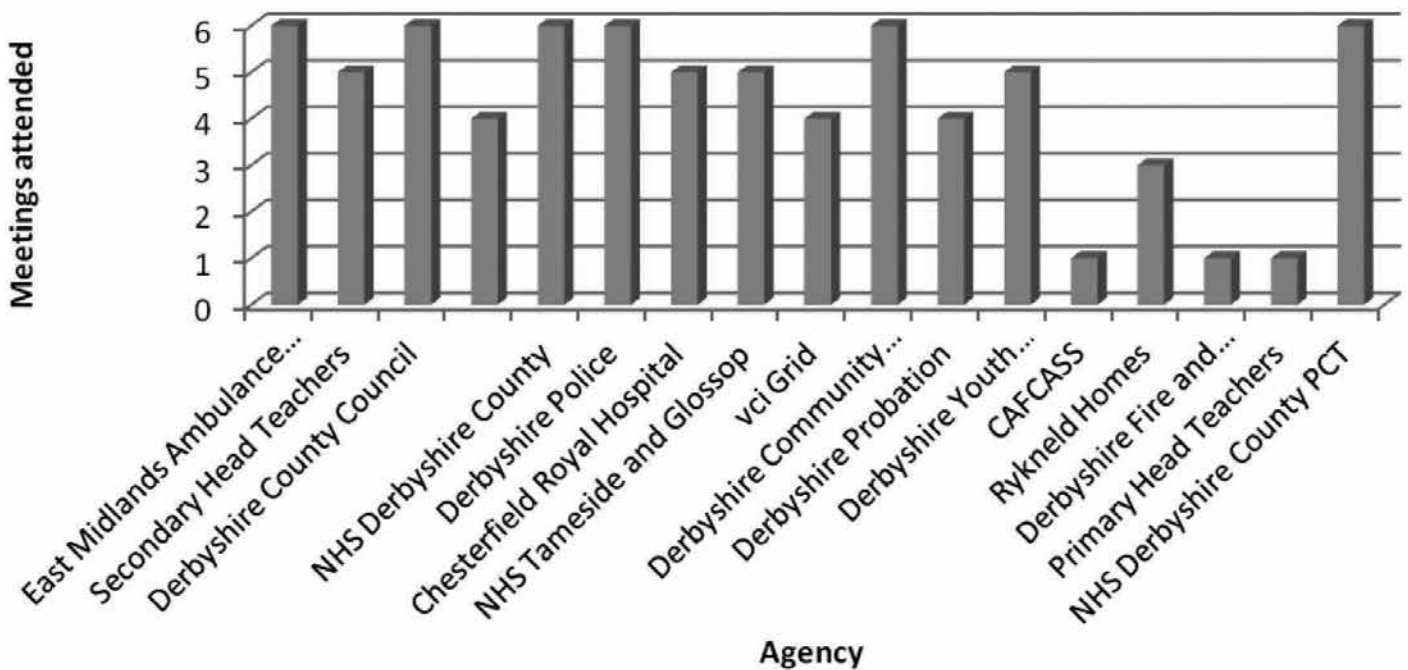
Attendance at DSCB main Board meetings by agencies during 2012–2013 is highlighted in the graph below.

DSCB budget and spending for 2012–13 is attached as an appendix.

## Governance progress during 2012–2013

A new independent chair for DSCB, with extensive experience in safeguarding has been in post since early 2013. Further progress is anticipated in relation to the coordination of some Derbyshire and Derby City Safeguarding Board activity as a result of the independent chair carrying out the role for both Boards.

### Meetings attended



NB\* The NHS Derbyshire County PCT Representative also represented the emerging Clinical Commissioning Groups during this period until statutory responsibility passed to the Clinical Commissioning Groups in April 2013.

In December 2012 the DSCB commissioned an audit of the performance of the Board by an independent consultant. The audit included observation of a DSCB meeting, the completion of an audit tool by DSCB members and a workshop with Board members facilitated by the consultant.

The following key areas for development of the Board were identified for immediate action:

- Governance
- Business planning
- Quality assurance
- Learning from serious case reviews
- Child Death overview Panel
- User engagement
- Measuring impact.

Progress and further action required in these areas is as follows:

## **Governance**

Membership of the DSCB and sub-groups has been scrutinised and a review carried out to ensure the appropriate agencies are represented, by the most appropriate person and that attendance is consistent.

Progress has been made regarding the establishment of an Executive Group but terms of reference and membership need approval.

A Chief Officer group has been proposed and terms of reference drafted.

A governance document is in draft which details the role, responsibilities and appraisal arrangements for the independent chair of DSCB.

Lay members will be recruited to DSCB. The person specification for the role has been written.

## **Business Planning**

The policies and procedures sub group is responsible for the updating of procedures and already has a number of work-streams to review and update policies and procedures in line with Working Together 2013.

A software company has been commissioned to re-design and update the DSCB website. This work was delayed awaiting the appointment of a new child

protection development manager to oversee the project.

A standing agenda is to be agreed which reflects the priorities identified in the 2013–14 Business Plan, their impact on outcomes for children and to what extent practitioners and the public are aware of them.

The Business Plan will be developed on completion of the DSCB Annual Report 2013–14.

## **Quality Assurance Management**

A Section 11 audit by all agencies was completed and in future will be undertaken annually.

DSCB has reached agreement that members will attend a child protection case conference twice yearly to report on the effectiveness of the conference and monitor the child's journey.

DSCB members will complete regular multi-agency joint audits of child protection case conferences, report findings and make recommendations, where necessary.

A specific audit on the data relating to disabled children will take place which fits with our priority relating to disabled children for the coming year.

## **Learning from SCRs**

A summary of the learning from SCRs has been completed and promotion of the lessons is being disseminated to all agencies in a variety of ways including the distribution of posters, leaflets and mouse mats.

Agreement has been reached for a summary of key learning to be attached to the supervision records of all children's services practitioners, to ensure regular examination and review of SCR themes. Learning from SCRs is our headline priority for 2013/2014.

## **Child Death Overview Panel**

There should be a clear audit trail evidencing lessons from deaths being translated into measurable actions. This fits with CDOPs priority to improve data collection in order to interrogate systems regarding modifiable factors and learning points.

## Measuring Impact

The Early Intervention and Prevention strategy has been approved by DSCB.

A child protection manager is located in the Police Central Referral Unit, and is pro-actively involved in information sharing and decision making at the early stages of referral and throughout the child's journey.

Clear arrangements are to be established to support children who have previously been subject to a child protection plan.

There is a need for development of appropriate performance indicators and data collection systems including for reporting into DSCB.

## Service user involvement

DSCB should identify processes for the involvement and consultation of children in the work of the board, this is seen as a priority to ensure focus on the voice of the child.

Overall the independent consultant noted clear commitment from Board members to address any gaps and weaknesses.

## Section 11 Audit 2013

Section 11 of the Children Act 2004 places duties on a range of organisations and individuals to ensure their functions and any services that they contract out to others are discharged with regard to the need to safeguard and promote the welfare of children.

A key task of DSCB is to monitor and evaluate what is done by the local authority and board partners individually and collectively to safeguard and promote the welfare of children. Where necessary DSCB will advise them on ways to improve.

The DCSB conducted an annual audit of partner agencies in April 2013, designed to monitor and evaluate compliance with the duties as defined in Section 11 of the Children Act 2004. A self-evaluation tool was issued covering ten key areas:

- Senior management commitment to the importance of safeguarding and promoting children's welfare
- A clear statement of the agency's responsibilities towards children available to all staff
- A clear line of accountability within the organisation for work on safeguarding and promoting the welfare of children
- Service development takes account of the need to safeguard and promote the welfare and is informed, where appropriate, by the views of children and families
- Staff training on safeguarding and promoting the welfare of children for all staff
- Working with or, depending on the agency's primary functions, in contact with children and families
- Safe recruitment and the management of allegations
- Effective inter-agency working to safeguard and promote the welfare of children
- Information sharing
- Work with individual children and families
- Monitoring and inspection.

## Summary of agency compliance with the Section 11 Audit process

Section 11 audits were completed by Derbyshire Children's Social Care, Derbyshire Health Providers including Clinical Commissioning Groups and NHS Trust Providers, East Midlands Ambulance Service, Derbyshire Constabulary, Derbyshire Youth Offending Service, Derbyshire Probation Trust, CAF/CASS and a composite audit was completed by three organisations – North East Derbyshire Council, Bolsover District Council and Rykneld Homes who are all represented on the DSCB.

It is acknowledged that CCGs are new organisations and have demonstrated through completion of the Section 11 audit tool their compliance regarding safeguarding children in Derbyshire. DSCB will work with CCGs during 2013–14 to ensure that appropriate evidence of compliance with the key areas is provided.

## Themes identified as areas for development from the Section 11 audits

A number of areas for development were identified across agencies but significant themes were to:

- Improve learning from SCRs
- Review processes for involving children, collating their views and their impact on development of services
- Amend policies regarding celebrity visits incorporating recommendations from the Saville investigation.

**An example of a robust audit and inspection process** has been developed by Derbyshire Children's Social Care where challenge days take place within a specific locality. An audit team, including senior managers and multi-agency colleagues, makes an unannounced visit to a social care and early help service. By auditing cases and interviewing staff groups the effectiveness of support to children and families provided by safeguarding and specialist services is scrutinised, and the impact of universal and targeted services through the multi-agency teams and early help services is reviewed. Findings and an action plan are shared with managers and staff within the locality.

DSCB is committed with its members to continue a rigorous section 11 audit process to ensure agency

safeguarding practice is as effective as possible. This is reflected in our priorities for 2013–2014.

## Allegations against people who work with children

The local authority is required under Section 11, Children Act 2004 to have a Local Authority Designated Officer (LADO) who should be involved in the management and oversight of individual cases relating to allegations relating to a person working with a child who has:

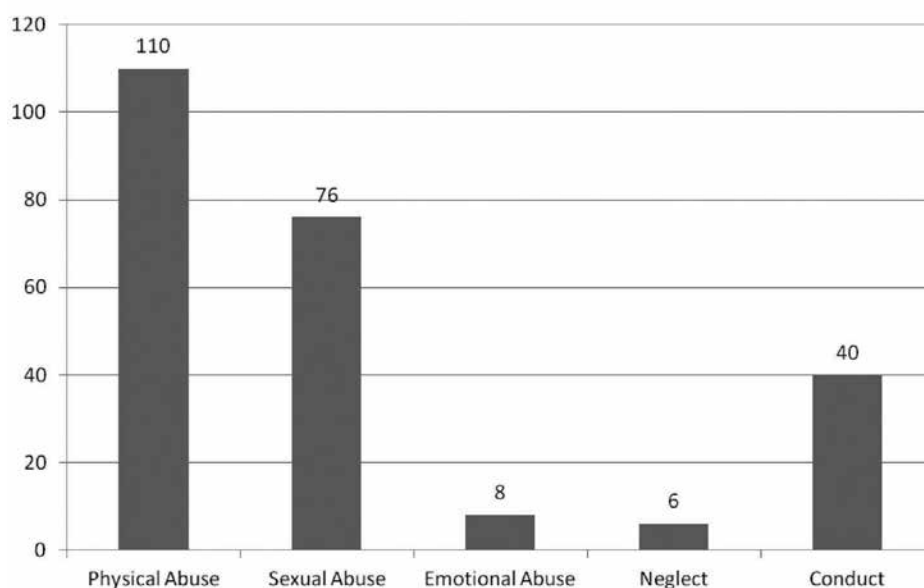
- Behaved in a way that has harmed a child or may have harmed a child
- Possibly committed a criminal offence against or related to a child or
- Behaved towards a child or children in a way that indicates they may pose a risk of harm to children

## LADO performance data April 2012 – March 2013

240 referrals were considered under LADO procedures during April 2012 – March 2013 compared to 142 referrals during April 2011 – March 2012.

The graph below illustrates the categories of concern for LADO referrals during 2012/13:

**Category of Concern 2012/2013**





## Category of Concern by Agency

Agency	Physical	Sexual	Emotional	Neglect	Conduct
Social Care	4	1	1	0	2
Education Teaching Staff	26	15	1	0	11
Education Other	23	7	3	1	13
Further Education	0	1	0	0	0
Higher Education	0	1	0	0	0
Child Care	17	4	0	3	2
Health	2	7	1	0	0
Police	0	1	0	0	1
Private Residential Unit	13	4	0	0	6
DCC Residential Unit	4	3	0	0	0
DCC Foster Care	3	2	0	0	1
Other LA Foster Care	3	2	0	0	0
Private Foster Care	3	1	0	2	0
Voluntary Sector	2	3	0	0	1
Other	10	24	2	0	3
<b>Total</b>	<b>110</b>	<b>76</b>	<b>8</b>	<b>6</b>	<b>40</b>

Of the 204 referrals received, 50 led to strategy meetings. At the time of preparing this report, 204 have been concluded with 36 still on-going. Of the 36, there are 10 with a continuing criminal investigation, 20 have on-going internal investigations, 1 requiring a Governors meeting to take place, 1 awaiting details and confirmation of safeguarding procedures to be put in place, and 4 are awaiting LADO strategy meetings.

The introduction of a child protection manager based permanently at the Derbyshire Police Central Referral Unit will provide a useful immediate single point of contact for all allegations requiring use of LADO procedures.

# Priorities for 2013/2014

Headline Priority Areas	Action/Development during 2013–14
<b>To improve the protection of children and the effectiveness of DSCB</b>	
1. Serious Case Reviews and Serious Incident Learning Reviews	<ul style="list-style-type: none"> <li>■ Develop an e-learning package focussing on lessons learnt from SCRs</li> <li>■ Disseminate learning across all agencies and develop processes to measure the impact on practice</li> <li>■ Refine the action tracker process for monitoring implementation of SCR/SILR recommendations and learning</li> <li>■ Develop a learning and improvement framework including processes for conducting SCRs</li> </ul>
2. Review and enhance our threshold and assessment processes to improve outcomes for children and to ensure congruence with Working Together 2013	<ul style="list-style-type: none"> <li>■ Develop and promote an updated threshold document</li> <li>■ Develop and implement assessment processes; from identifying children who would benefit from early help through to statutory assessments</li> <li>■ Examine re-referral rates to understand reasons for re-referral and formulate necessary action</li> </ul>
3. Focus on children and young people	<ul style="list-style-type: none"> <li>■ A route for the voices of children and young people to be heard at DSCB</li> </ul>
<b>Priorities to improve the protection of children</b>	<b>Action/Development:</b>
Child sexual exploitation	<ul style="list-style-type: none"> <li>■ Effective partnership with Safe and Sound for strategy development, training and awareness raising, case audit</li> <li>■ Agree formal CSE strategy</li> <li>■ Review High Risk Management Group and Vulnerable Young People’s Panel and collaborate with Derby city as appropriate</li> <li>■ Continue implementation and review of robust systems to identify and support children who go missing from home</li> </ul>

Early help and intervention	<p>Ensure that commissioning groups implement the early intervention and prevention strategy by:</p> <ul style="list-style-type: none"> <li>■ Delivering services that engage families, communities and complex clusters of need</li> <li>■ Re-design locality based early help and social care services for children and young people</li> <li>■ Develop processes for measuring the difference early help services make to children and families</li> </ul>
Private fostering	<ul style="list-style-type: none"> <li>■ Continue to actively promote the private fostering e-learning package across all agencies</li> <li>■ Develop an audit/evaluation tool to measure compliance with e-learning</li> </ul>
Disabled children	<ul style="list-style-type: none"> <li>■ Develop multi-agency training programme</li> <li>■ Consider the establishment of a DSCB Sub Group to lead on taking forward the learning and actions from the Ofsted thematic inspection of services for disabled children</li> </ul>
Parental substance abuse	<ul style="list-style-type: none"> <li>■ Devise a comprehensive working strategy for Derbyshire to inform service development and best practice</li> <li>■ Improve information sharing arrangements</li> <li>■ Develop quality of assessments</li> <li>■ improve outcomes for children, young people and their families</li> </ul>
<b>Priorities to improve the effectiveness of DSCB</b>	<b>Action/Development</b>
DSCB audit function	<p>Ensure</p> <ul style="list-style-type: none"> <li>■ A section 11 audit is undertaken annually</li> <li>■ The Quality and Performance sub-group develops an annual multi-agency audit programme</li> <li>■ Appraisal arrangements for the DSCB chair to be agreed</li> <li>■ Child protection conference processes are subject to a multi-agency audit</li> <li>■ Amended DSCB governance arrangements are implemented</li> </ul>
DSCB governance	<p>Establish</p> <ul style="list-style-type: none"> <li>■ A Chief Officers group meeting twice a year to provide appropriate challenge regarding the county's safeguarding activities</li> <li>■ An executive group meeting monthly to provide ongoing momentum of priorities</li> <li>■ An updated and improved website for DSCB fully accessible to professionals, the public and young people</li> </ul>

# Concluding statement on the effectiveness of our safeguarding arrangements

Derbyshire Safeguarding Children Board is made up of a diverse group of agencies and professionals all of whom are committed to ensure the continued safeguarding and protection of Derbyshire's children.

Working Together to Safeguard Children 2013 emphasizes the importance of agencies working together and the pivotal role of the Local Safeguarding Children Board in promoting effective practice and monitoring the local arrangements.

Furthermore, analysis of serious case reviews consistently highlights the importance of multi-agency working and the importance of early sharing of information across agencies whenever a child is deemed to be at risk of serious neglect, harm or abuse.

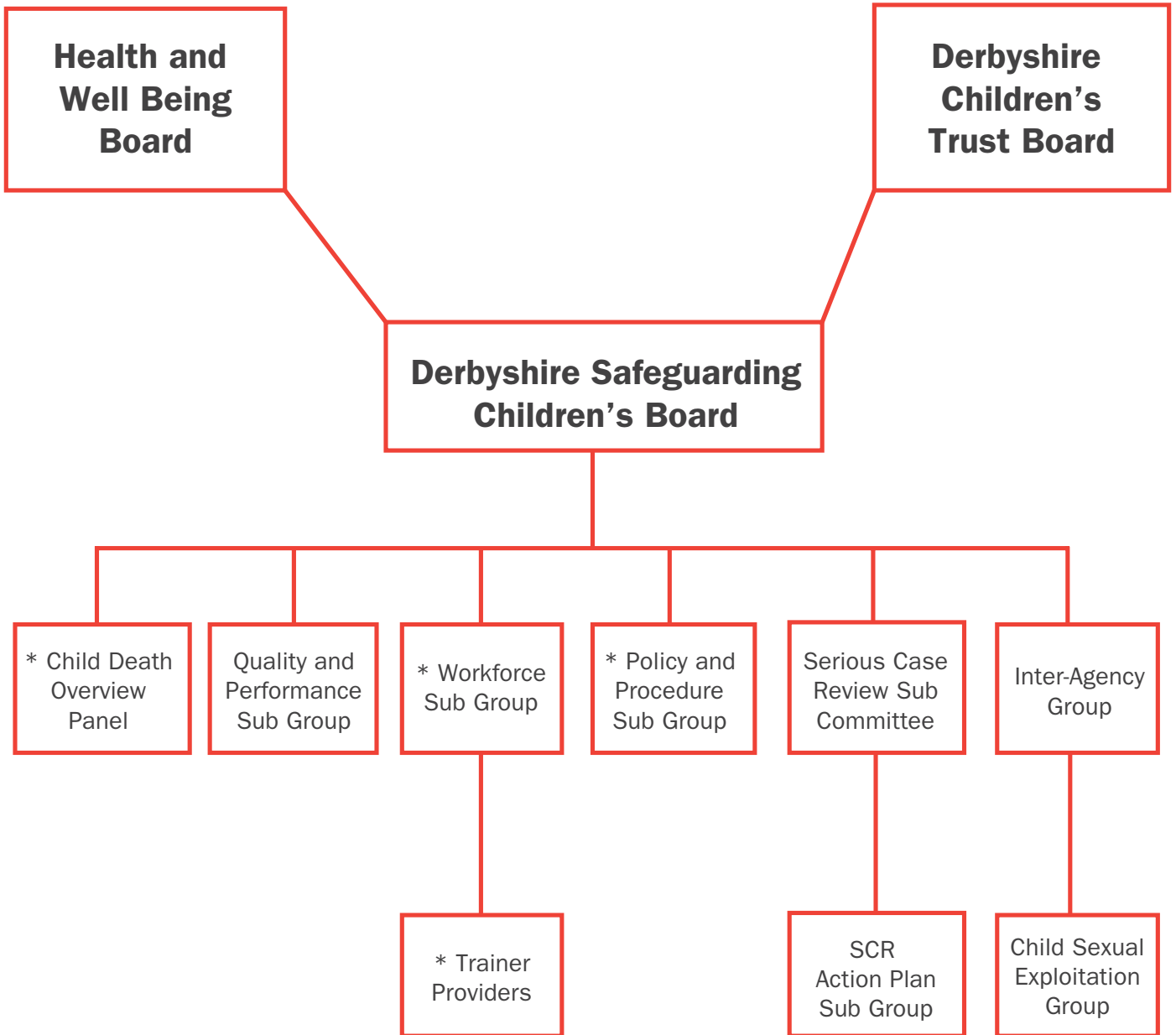
The work of DSCB members regarding our priorities relating to vulnerable young people, and children and families in need of early help and support demonstrates a willingness to provide united services. The provision of multi-agency safeguarding training across Derbyshire remains a strength, and Serious Case Review activity in the county is rigorous and effective in ensuring that lessons are identified, actioned and monitored. Much progress is being made regarding the sharing of learning from Serious Case Reviews and this is highlighted as our

headline priority for the coming year. Future scrutiny of services and outcomes for children will indicate the effectiveness of this work.

Board members are working jointly to quality assure and audit a number of safeguarding processes including a focus on child protection case conferences in order that our services to this most vulnerable group of children and families are as robust as possible. All agencies were encouraged to examine their own safeguarding practice in a Section 11 (Children Act 2004) audit with positive findings and agencies compliant with safeguarding requirements.

DSCB commissioned an independent audit of its own performance and a number of areas for development were identified particularly around governance arrangements of the Board. We believe DSCB has demonstrated effective safeguarding arrangements this year, and the additional progress being made in response to the audit findings will only improve our protection of children in Derbyshire in the future.

# DSCB 2012-2013



\* joint with Derby City Safeguarding Children's Board

# Appendices

## Quality and Performance Sub Group

Deputy Strategic Director Safeguarding and Specialist services – Chair
Head of Legal Services
Head of Child Protection
<b>Health</b>
Derbyshire Community Health Service NHS Trust, Senior Nurse Advisor for Safeguarding
Derbyshire CCGs, Designated nurse
Derbyshire CCGs, Designated Doctor
Chesterfield Royal Hospital NHS Foundation Trust, Consultant Child Psychiatrist
<b>Other</b>
Derbyshire Police
Probation
Derbyshire Healthcare NHS Foundation Trust

## The SCR Sub Committee

C&YPD – Head of Service for Children’s Quality Assurance	Derby City Council
CAYA – Deputy Assistant Director	Derbyshire County Council
Chief Nurse	North Derbyshire CCG
Designated/Consultant Nurse	Derbyshire County
Designated Doctor	Derbyshire County
Chief Nurse	Derbyshire Community Health Services NHS Trust
Deputy Director of Nursing	Derbyshire Healthcare NHS Foundation Trust
EMAS – Locality Quality Manager	East Midlands Ambulance Service
Police – Detective Chief Inspector, Public Protection	Derbyshire Police
Probation – Operations Manager	Derbyshire Probation
Team Manager	Derbyshire Youth Offending Service

## Child Death Overview Panel

Consultant Public Health (Chair)	Derby City Council
C&YPD – Head of Service for Children’s Quality Assurance	Derby City Council
CAYA – Deputy Assistant Director	Derbyshire County Council
CDOP Coordinator	Derbyshire Healthcare NHS Foundation Trust
Consultant Paediatrician	Derby Hospitals NHS Foundation Trust
Coroner	Derby and Derbyshire
Designated Nurse	Derby City
Designated/Consultant Nurse	Derbyshire County
EMAS – Locality Quality Manager	East Midlands Ambulance Service
Emergency Medicine – Consultant	Derby Hospitals NHS Foundation Trust
Matron	Chesterfield Royal Hospital NHS Foundation Trust
Midwifery – Head of	Royal Derby Hospital NHS Foundation Trust
Named Doctor	Tameside & Glossop
Named Nurse	Derbyshire Healthcare NHS Foundation Trust
Named Nurse Safeguarding Children	Chesterfield Hospital NHS Foundation Trust
Nurse Deputy Chief/Head of Multi Professional Practice & Standards	Derbyshire Healthcare NHS Foundation Trust
Paediatric Liaison Health Visitor	Derbyshire Healthcare NHS Foundation Trust
Pathologist	Sheffield Children’s Hospital NHS Trust
Police – Detective Chief Inspector, Public Protection	Derbyshire Police
Public Health – Deputy Director/Consultant	NHS Derbyshire County
SUDI Lead/Consultant Paediatrician	Chesterfield Royal Hospital NHS Foundation Trust and Named Doctor for Bolsover & District
SUDI Lead/Designated Doctor	Derbyshire Healthcare NHS Foundation Trust

## The Policies and Procedures Sub Group

Head of Quality Assurance, Derby CYPD, Chair
<b>DCC</b>
MAT Manager
Head of Legal Services
Head of Child Protection
Training Co-ordinator
<b>Derby City Council</b>
Policy and Development Officer
Education Officer
Head of Legal Services
Board Manager, Derby SCB
<b>Health</b>
Named Doctor Derbyshire CCGs
Named Nurse Derby Hospitals NHS Foundation Trust
Named Nurse Derbyshire Healthcare NHS Foundation Trust
Named Nurse Derbyshire Community Health Services NHS Trust
Named Nurse Chesterfield Royal NHS Foundation Trust
Designated Nurse Derbyshire County
Designated Nurse Derby City
<b>Other</b>
Addaction Derby City
Derbyshire Police
Probation
Voluntary Sector representative

## Workforce Sub Group

Head of Child Protection DCC – Chair
Senior Consultant Learning and Development DCC
Senior Staff Development Officer Derbyshire YOS
Operations Manager Derbyshire Probation
Head of Service, Quality Assurance Derby city
Head of Children in Care and Regulated services Derby city
HR Manager Derby city
Senior Solicitor Derby city
DHCFT



HR Advisor NED
Designated Nurse Derbyshire County
Designated Nurse Derby City

### Training Providers Sub Group

Lead Officer for DSCB-DCC and Derby – Chair – alternate annually
Adult Education lead – DCC and Derby
Derby University
Colleges of Further Education representatives – Derbyshire and Derby
Designated Nurse Derbyshire County
Designated Nurse Derby City
Named Nurse Derbyshire Community Health Services
Named Doctor Derby City

## Additional information regarding attendance at conferences by role type

### Initial and Review Conferences for Social Care

CAYA Social Care Roles	2012/13 – Initial			2012/13 – Review		
	Invited	Attended	% Attended	Invited	Attended	% Attended
Area Manager	491	2	0.4%	898	2	0.2%
Chairperson	503	478	95.0%	900	855	95.0%
Children & Families Area Team	15	11	73.3%	25	16	64.0%
Service Manager	534	78	14.6%	855	74	8.7%
Social Worker	670	582	86.9%	1070	867	81.0%
<b>Total</b>	<b>2213</b>	<b>1151</b>	<b>52.0%</b>	<b>3748</b>	<b>1814</b>	<b>48.4%</b>

## Initial and Review Conferences for Health

Health Roles	2012/13 – Initial			2012/2013 – Review		
	Invited	Attended	% Attended	Invited	Attended	% Attended
Community Doctor	15	4	26.7%	10	4	40.0%
GP	486	22	4.5%	780	16	2.1%
Health Visitor	367	298	81.2%	605	505	83.5%
Hospital Social Worker	1	1	100.0%	3	2	66.7%
Midwife	168	109	64.9%	69	41	59.4%
Named CP Nurse	565	57	10.1%	979	39	4.0%
Other Health Professional	204	101	49.5%	150	80	53.3%
Paediatric Consultant	55	15	27.3%	35	1	2.9%
School Nurse	356	237	66.6%	640	485	75.8%
<b>Total</b>	<b>2217</b>	<b>844</b>	<b>38.1%</b>	<b>3271</b>	<b>1173</b>	<b>35.9%</b>

## Initial and Review Conferences for Mental Health

Mental Health Roles	2012/13 – Initial			2012/13 – Review		
	Invited	Attended	% Attended	Invited	Attended	% Attended
Children's Mental Health Services	26	12	46.2%	46	15	32.6%
Community Mental Health Services	30	13	43.3%	54	20	37.0%
<b>Total</b>	<b>56</b>	<b>25</b>	<b>44.6%</b>	<b>100</b>	<b>35</b>	<b>35.0%</b>

## DSCB 2012/2013 Spending

		Budget (£)	Actuals (£)	Under/Over spend (£)	Reasons
Training	Staffing	152,339	128,485	-23,854	Reduction in training officer hours by average of approx 0.5FTE over 12 months
	Venue/Training Costs	42,485	25,322	-17,163	For comparison, spend in 2011/12 was £31k
	Other Costs	8,120	8,133	13	
Operations	Staffing	104,960	73,363	-31,597	Budget set based on higher salary grades for recharges of staff. Also, additional admin time budgeted for but not used
	Printing/Publicity	10,537	3,380	-7,157	
	Conference Costs	7,281	8,355	1,074	
	Independent Chair	7,000	4,825	-2,175	
SCRs		24,399	35,843	11,444	
<b>Total</b>		<b>357,121</b>	<b>287,705</b>	<b>-69,415</b>	

Derbyshire  
**Safeguarding  
Children  
Board**



**Safeguarding  
Children**  
Everybody's Business

Derbyshire Safeguarding Children Board, November 2013.